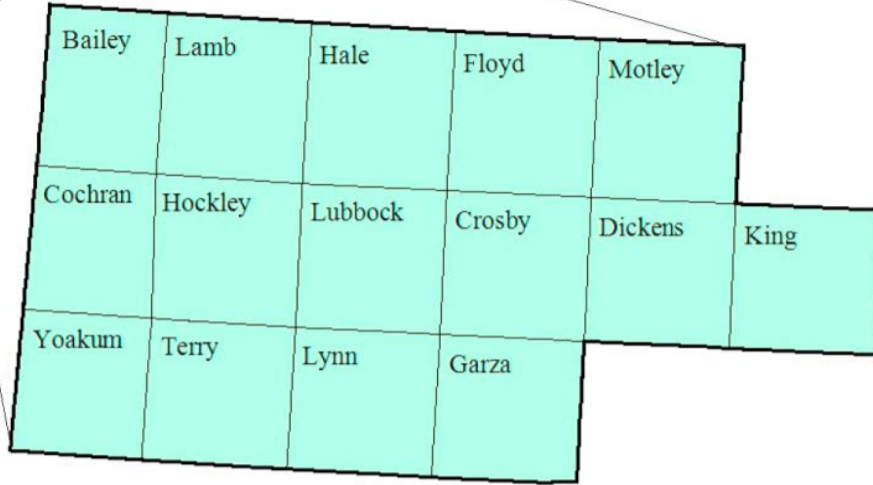


South Plains Workforce Development Area

May 2017



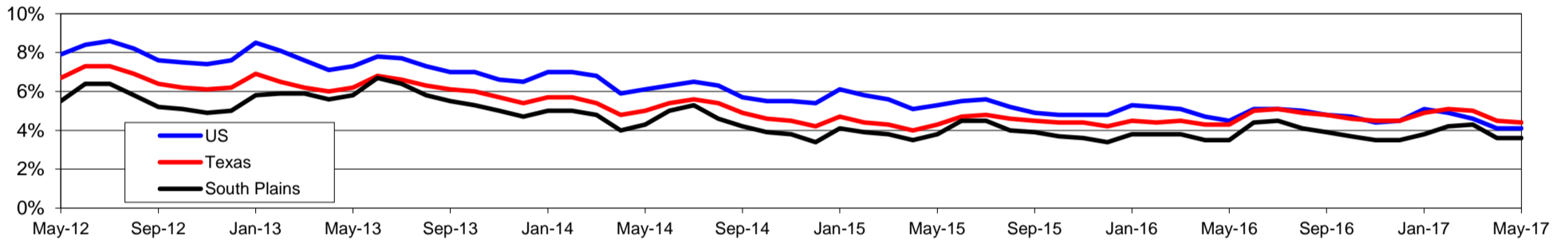
WDA Labor Force Statistics				
	May-17	Apr-17	May-16	OTY
CLF	208,053	207,787	208,828	-775
Employed	200,556	200,303	201,512	-956
Unemployed	7,497	7,484	7,316	181
Rate	3.6%	3.6%	3.5%	0.1%

Texas Labor Force Statistics				
	May-17	Apr-17	May-16	OTY
CLF	13,449,184	13,506,876	13,245,519	203,665
Employed	12,857,230	12,895,129	12,679,140	178,090
Unemployed	591,954	611,747	566,379	25,575
Rate	4.4%	4.5%	4.3%	0.1%

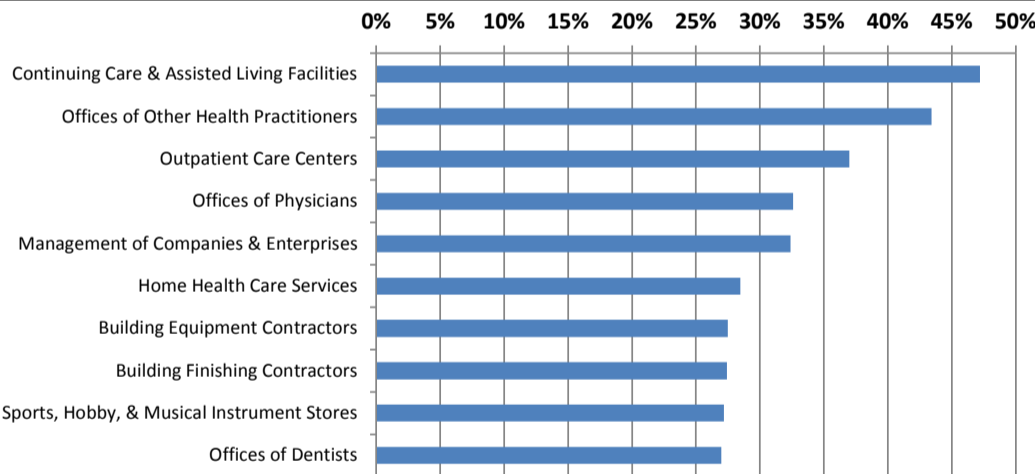
US Labor Force Statistics				
	May-17	Apr-17	May-16	OTY
CLF	159,979,000	159,817,000	158,800,000	1,179,000
Employed	153,407,000	153,262,000	151,594,000	1,813,000
Unemployed	6,572,000	6,555,000	7,207,000	-635,000
Rate	4.1%	4.1%	4.5%	-0.4%

Continued Claims for the Week of the 12th				
	May-17	Apr-17	May-16	OTY
WDA	1,068	1,117	1,364	-296
Texas	112,343	116,413	148,489	-36,146

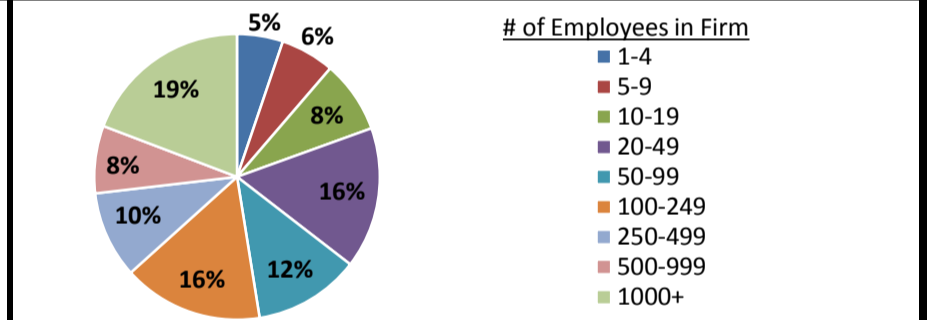
Historical Unemployment Rates



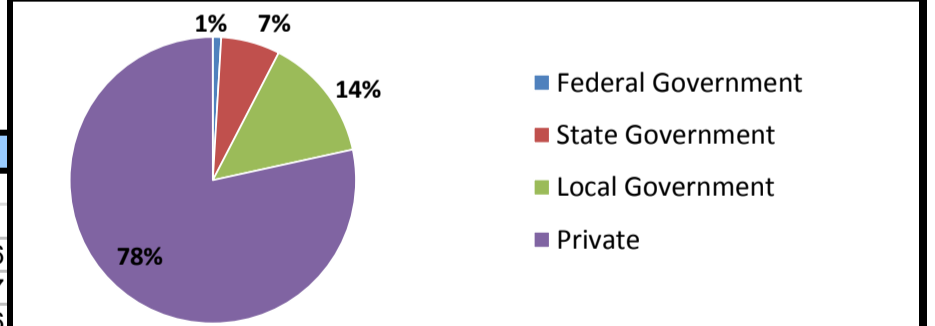
Projected Fastest Growing Industries in WDA (% growth 2014-2024)



Employment by Size Class (4th Quarter 2016)



Employment by Ownership (4th Quarter 2016)



Average Weekly Wage (4th Quarter 2016)

	Q4 2016	Q3 2016	Q4 2015	Change	
				Quarter	Year
WDA	\$826	\$800	\$832	\$26	-\$6
Texas	\$1,072	\$1,042	\$1,099	\$31	-\$27
US	\$1,067	\$1,027	\$1,083	\$40	-\$16

Employment by Industry (4th Quarter 2016, Percent Change)

Industry	Employment	% of total	% Change	
			Quarter	Year
Natural resources and mining	11,691	6.3%	12.2%	1.0%
Construction	8,837	4.8%	-1.5%	3.2%
Manufacturing	6,209	3.4%	0.1%	-3.3%
Trade, transportation and utilities	40,379	21.9%	2.3%	1.4%
Information	3,774	2.0%	-3.2%	-5.2%
Financial activities	8,949	4.9%	0.4%	0.2%
Professional and business services	13,802	7.5%	2.2%	3.7%
Education and health services	55,451	30.1%	3.7%	1.3%
Leisure and hospitality	21,601	11.7%	1.1%	4.8%
Other services	5,976	3.2%	-1.3%	-3.3%
Public administration	7,508	4.1%	0.9%	3.1%
Total	184,177	100.0%	2.5%	1.5%

Employment by Industry (4th Quarter 2016)

