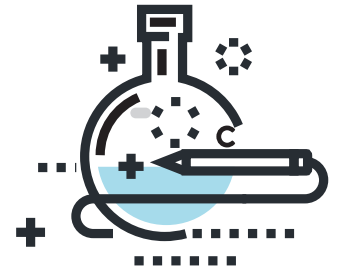


South Plains TEACHER & COUNSELOR EXTERNSHIP PROGRAM

Teacher & Counselor Externships offer a unique professional development opportunity connecting the classroom to the workplace. Teachers and counselors learn how classroom content and learning strategies are applied in the workplace. With first-hand exposure, teachers and counselors can design and implement classroom activities, projects, and work-based learning opportunities, adding relevance and meaning to classroom learning.

The South Plains Teacher & Counselor Externship experience will provide teachers and counselors with three full working days ONSITE in a Lubbock or South Plains area local business in the summer of 2022. During this program, businesses will provide teachers and counselors with hands-on working experience and opportunities to observe several different aspects of business techniques and processes. These teachers and counselors will gain real-world perspective and application connected to the skills they are teaching in course-specific areas.

Teachers and counselors (middle and high school) will be selected through an application process. Although there is limited funding for teachers and counselors to participate, all that are interested in the program are encouraged to apply for an externship. Priority will be given to career and technical education teachers and counselors, but based on the level of interest, further opportunities may be available with help from community partners.



BENEFITS

- \$700 stipend at the end of the 3-day externship with business (payroll taxes are deducted) and submission of lesson plan.
- Possible Professional Development Credit – refer to individual district requirements.
- Invaluable experience and business connections.

APPLICATION: Teachers and counselors are asked to identify what they hope to gain from this experience and explain how it will impact the educational outcomes of students.

ATTENDANCE: Employers will certify teacher and counselor attendance and fulfillment of expectations.

LESSON PLAN: Teachers and counselors will submit and implement a lesson plan using what they learned.

PRESENTATION PLAN: Teachers and counselors will identify a plan to present their experience to their peers. (PLC, Innovation Summit, Conference, etc.).

POST- EXTERNSHIP SURVEY: Teachers and counselors will complete a survey associated with the experience.



PROCESS

- **Friday, March 22nd** – Application Deadline: workforcesouthplains.org/externship
- **Friday, May 20th** – Notification of Acceptance & Employer Placement
- **Thursday, June 2nd** – Onsite Orientation at Region 17 and all required paperwork is due
- **Wednesday, July 27th** - Lesson Plans due at a half-day debrief session at Region 17 ESC

*All stipends will be paid through your school district after July 31st, 2022

In partnership with
**Lubbock Economic Development Alliance, Workforce Solutions South Plains,
Region 17 ESC, Texas Workforce Commission**

The South Plains Teacher Externship program is financed with federal monies in the amount of \$167,948 (80%); \$41,987 (20%) of the program is financed by other sources.