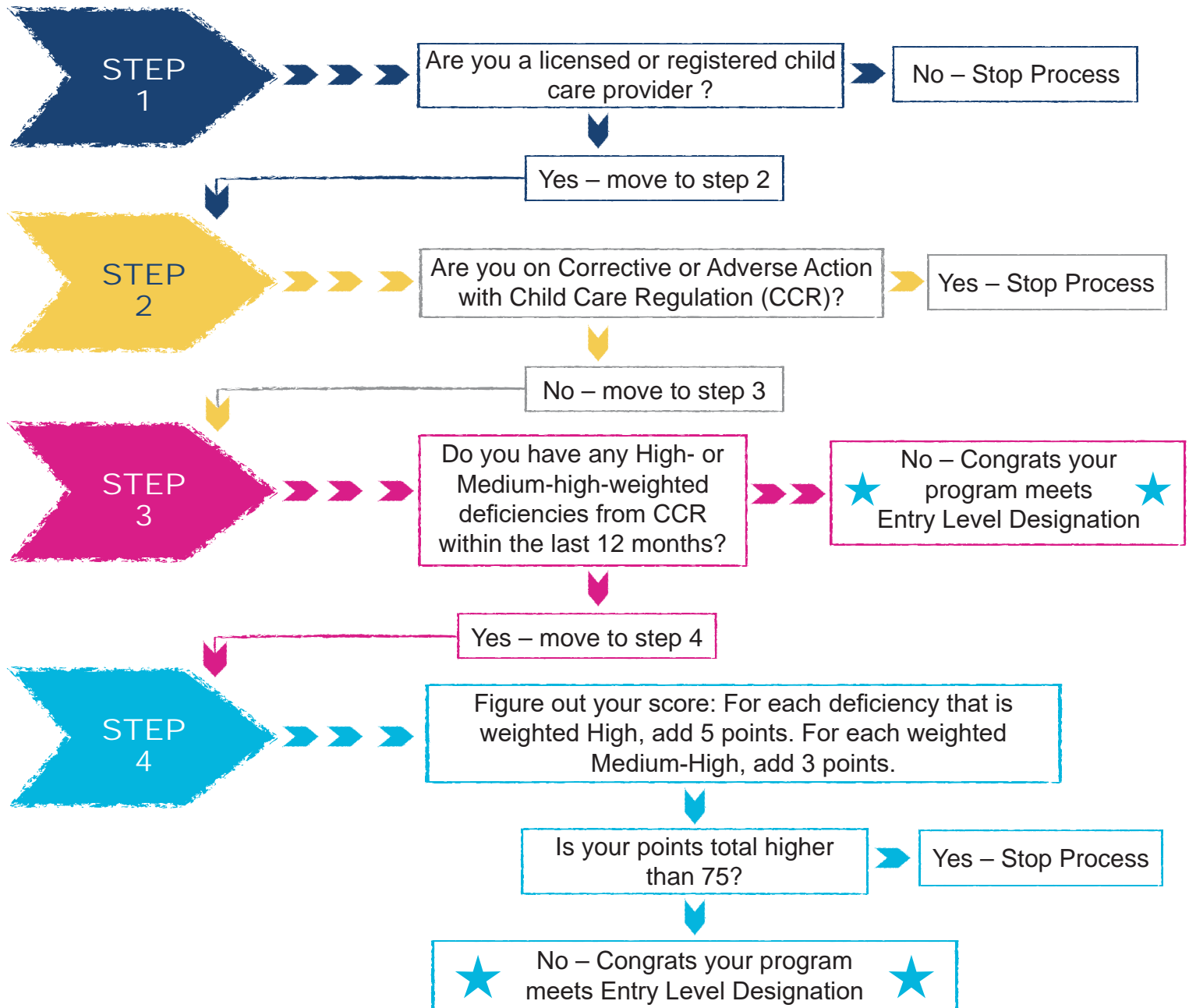




## What is Entry Level

Effective October 3, 2022 any Texas child care provider wishing to participate in the Texas Workforce Commission Child Care Services (CCS) program must be designated as Entry Level and agree to work with a mentor towards Texas Rising Star certification. Follow the steps to Entry Level Designation!



If you had to “Stop Process” at any time, please reach out to your local Child Care Regulation contact or Workforce Solutions office to find out how to move forward.